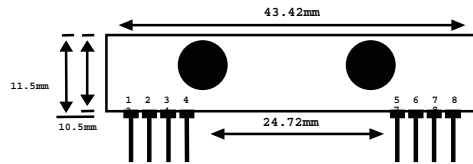


RLP434A SAW Based Receiver



pin 1 : Gnd
 pin 2 : Digital Data Output
 pin 3 : Linear Output /Test
 pin 4 : Vcc
 pin 5 : Vcc
 pin 6 : Gnd
 pin 7 : Gnd
 pin 8 : Antenna

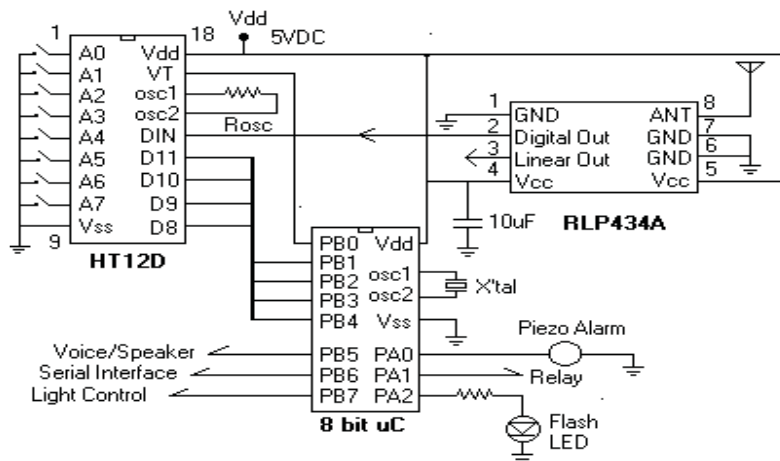
Frequency 315, 418 and 433.92 Mhz

Modulation : ASK
Supply Voltage : 3.3 - 6.0 VDC
Output : Digital & Linear

Symbol	Parameter	Conditions	Min	Typ	Max	
Vcc	Operating supply voltage		3.3	5.0V	6.0	V
Itot	Operating Current		-	4.5		mA
Vdata	Data Out	Idata = +200 uA (High)	Vcc-0.5	-	Vcc	V
		Idata = -10 uA (Low)	-	-	0.3	V
Electrical Characteristics						
Characteristics	SYM	Min	Typ	Max	Unit	
Operation Radio Frequency	FC	315, 418 and 433.92			MHz	
Sensitivity	Pref		-110		dBm	
Channel Width			+500		Khz	
Noise Equivalent BW			4		Khz	
Receiver Turn On Time			5		ms	
Operation Temperature	Top	-20	-	80	C	
Baseboard Data Rate			4.8		KHz	

Application Circuit :

Typical RF Receiver using HT12D-18DIP, a Binary 12 bit Decoder with 8 bit uC HT48RXX from Holtek Semiconductor Inc.



Laipac Technology, Inc.

50 West Beaver Creek Rd. Richmond Hill Ontario L4B 1G5 Canada
 Tel: (905)762-1228 Fax: (905)763-1737 e-mail: info@laipac.com

