

Document No.: 210-AN-0001

Document Type: Application Note

M2M 3350 64bit driver installation procedure

Version 1.0.1

10/7/2010



Copyright 2010 Laipac Technology Inc.

Revision	Date	Content
1.0.1	10/7/2010	Initial release
1.0.2	10/7/2010	Content Edited

M2M 3350 64bit driver installation procedure

Preparation before installation of 64bit driver

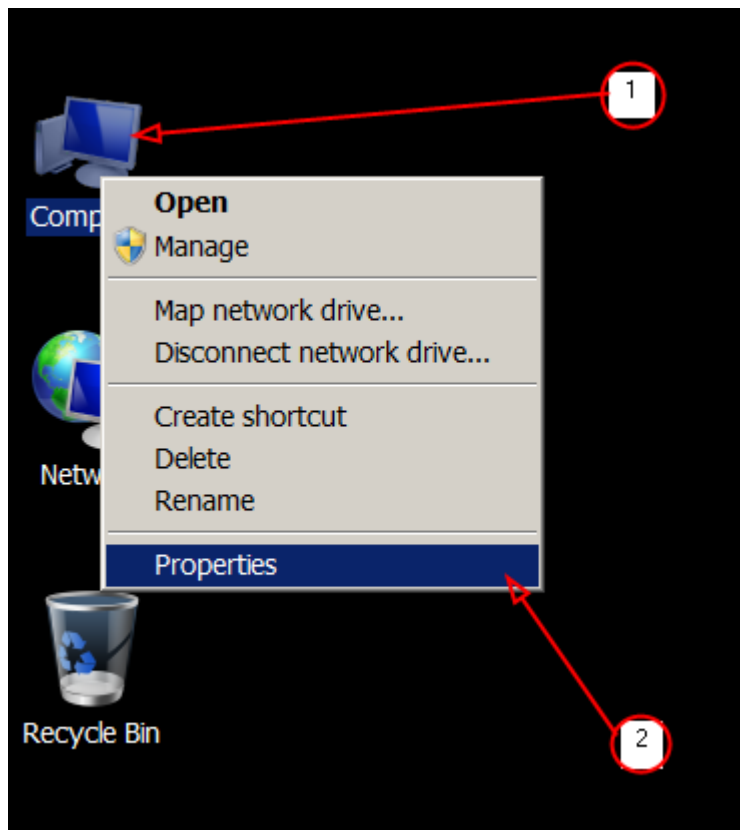
1) Download M2M 3350 driver compressed package from Laipac's website.

http://www.laipac.com/Downloads/TrackingSystems/m2m/M2M-3350-DRV_Win_XP_S2K3_Vista_7.zip

2) Check device PID & VID

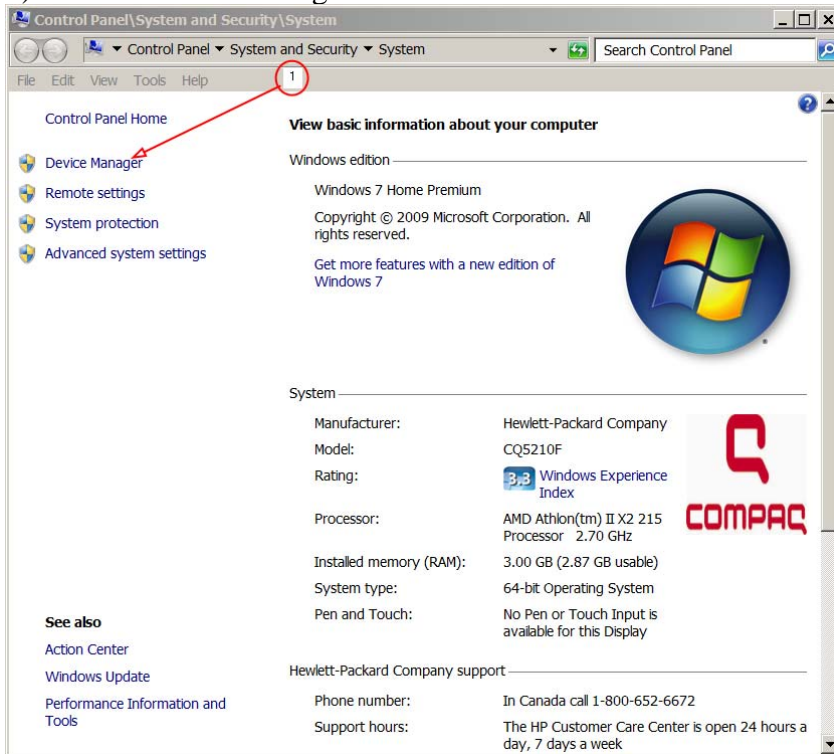
Step 1)

- 1) Connect your M2M 3350 to PC running Windows 7 O.S.
- 2) Right click "computer" icon on the "Desktop"
- 3) Select properties



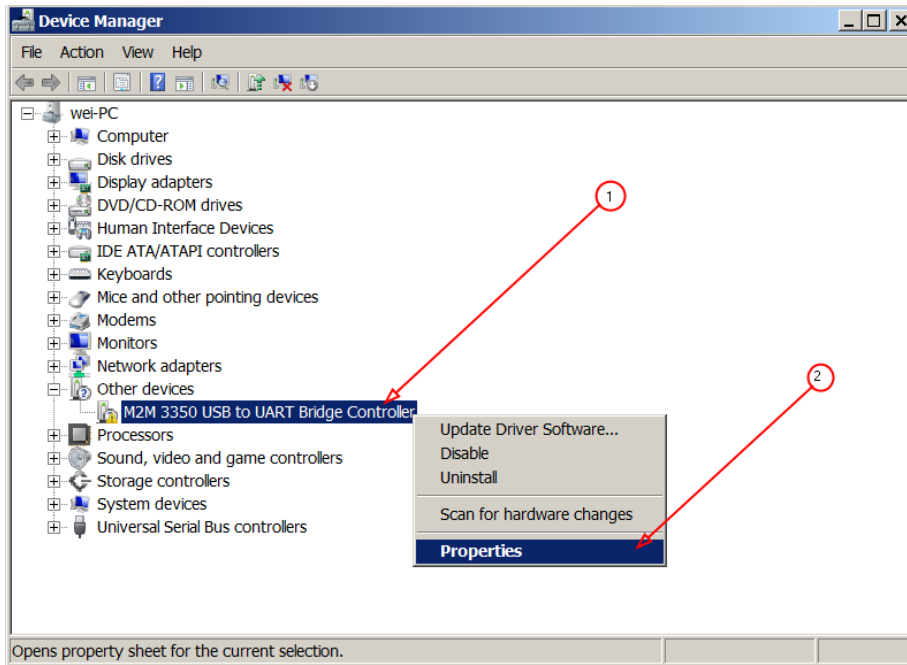
Step 2)

1) Select “Device Manager”



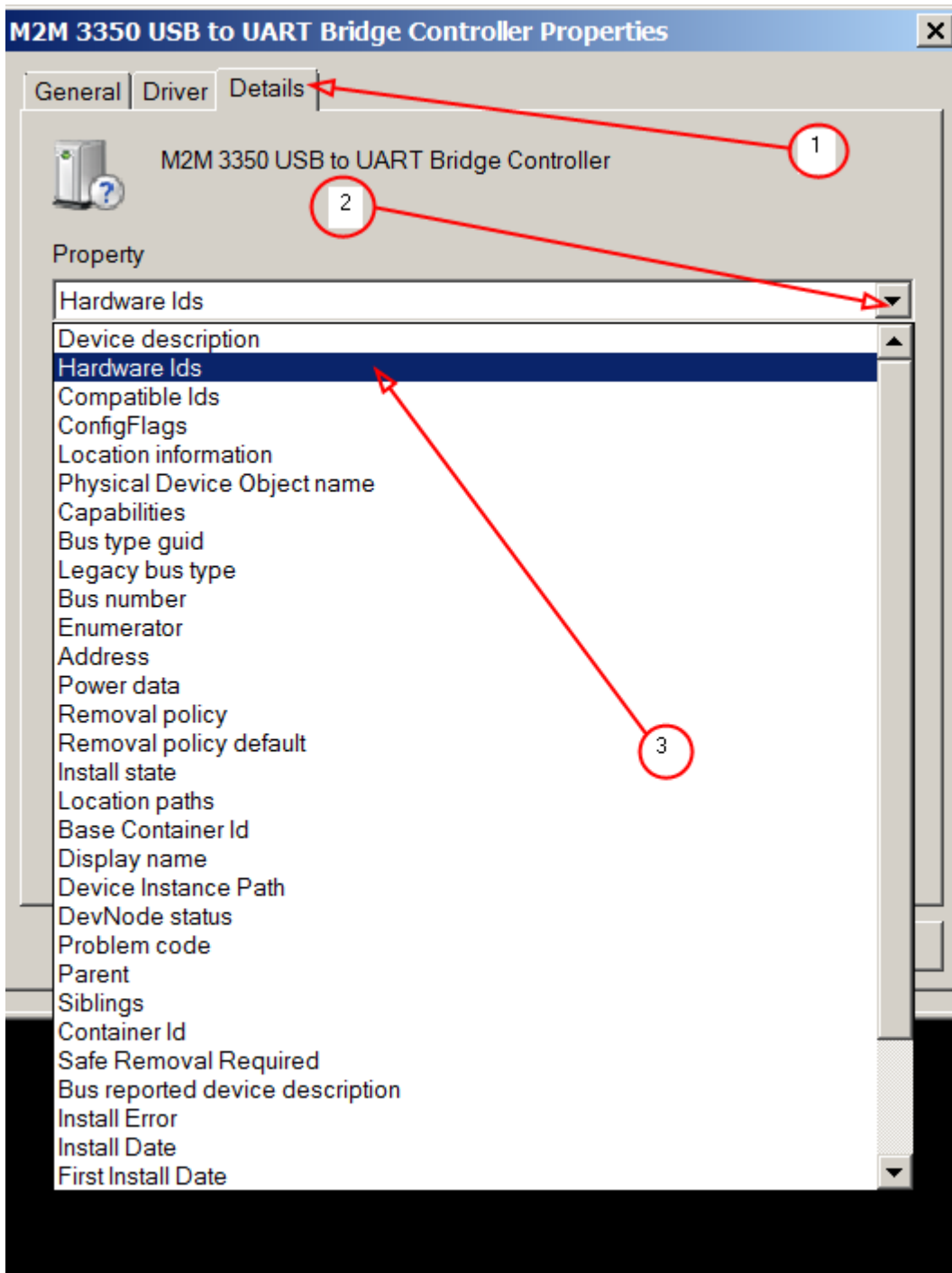
Step 3)

- 1) Right click “M2M 3350 USB to UART Bridge Controller”
- 2) Select “Properties”



Step 4)

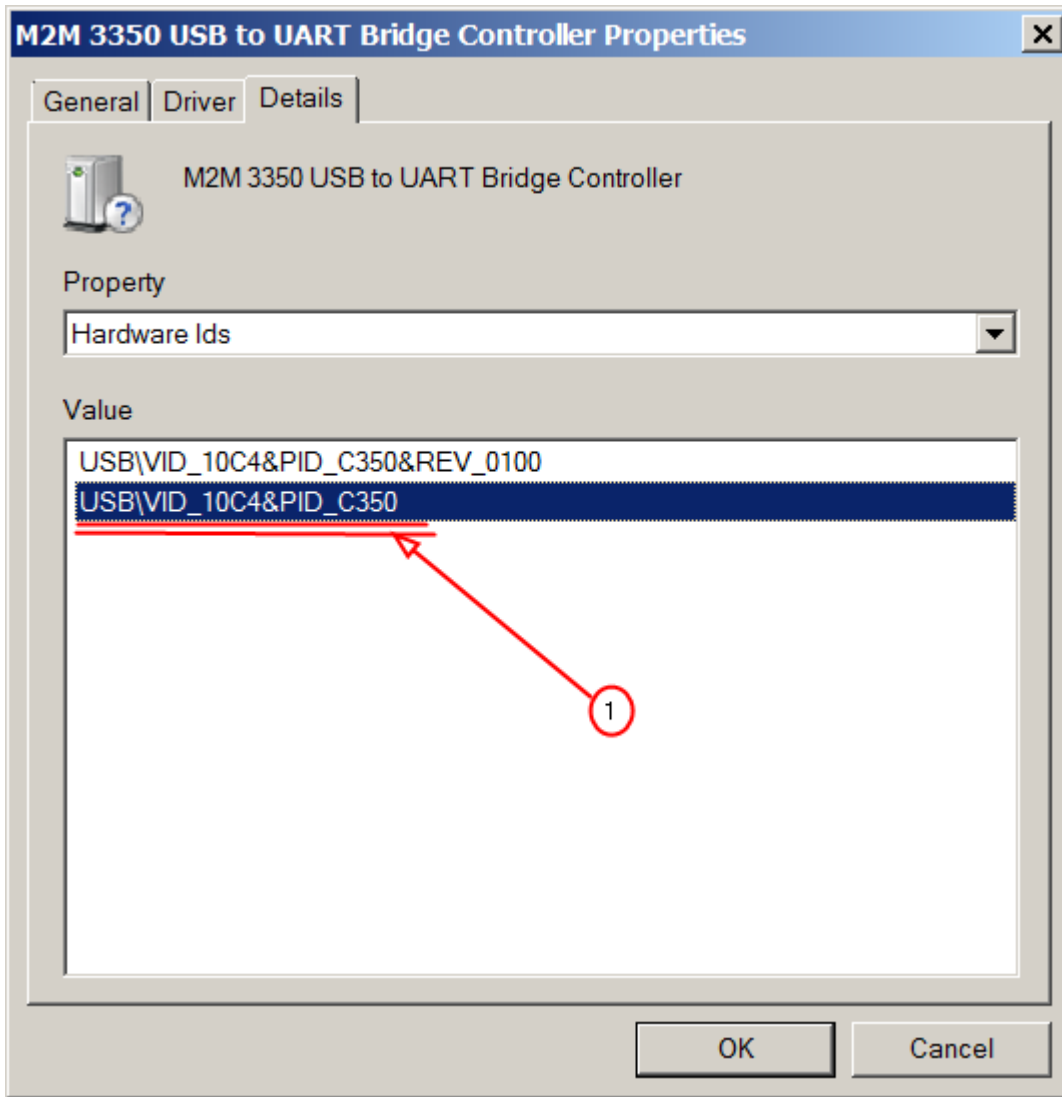
- 1) Select "Details"
- 2) Click "drop down" menu
- 3) Select "Hardware Ids"



Step 5)

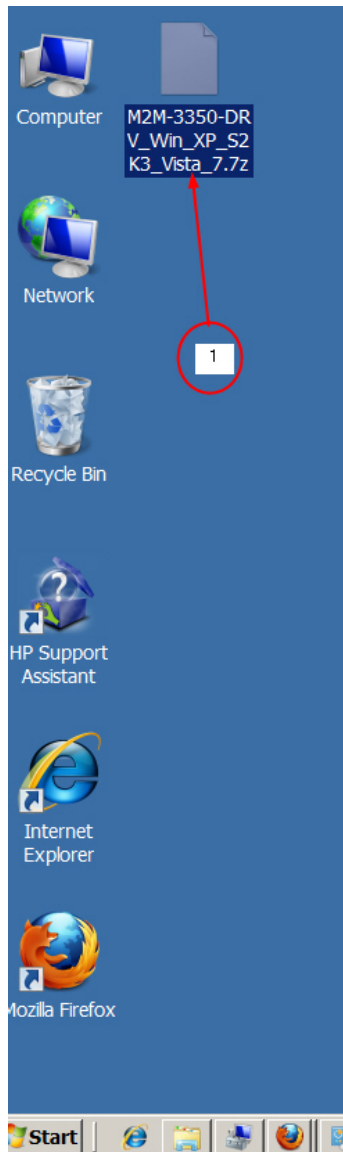
- 1) IDs must be “VID_10C4&PID_C350”

Otherwise contact to Laipac immediately if it shows difference information here.

**Installation of 64bit driver:**

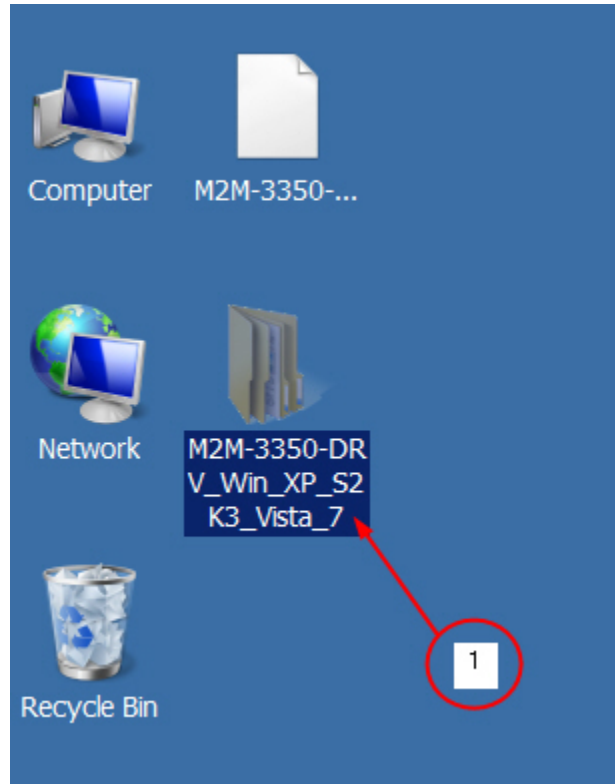
Step 1)

1) Uncompress the package (The name of package file may be different from shown below)



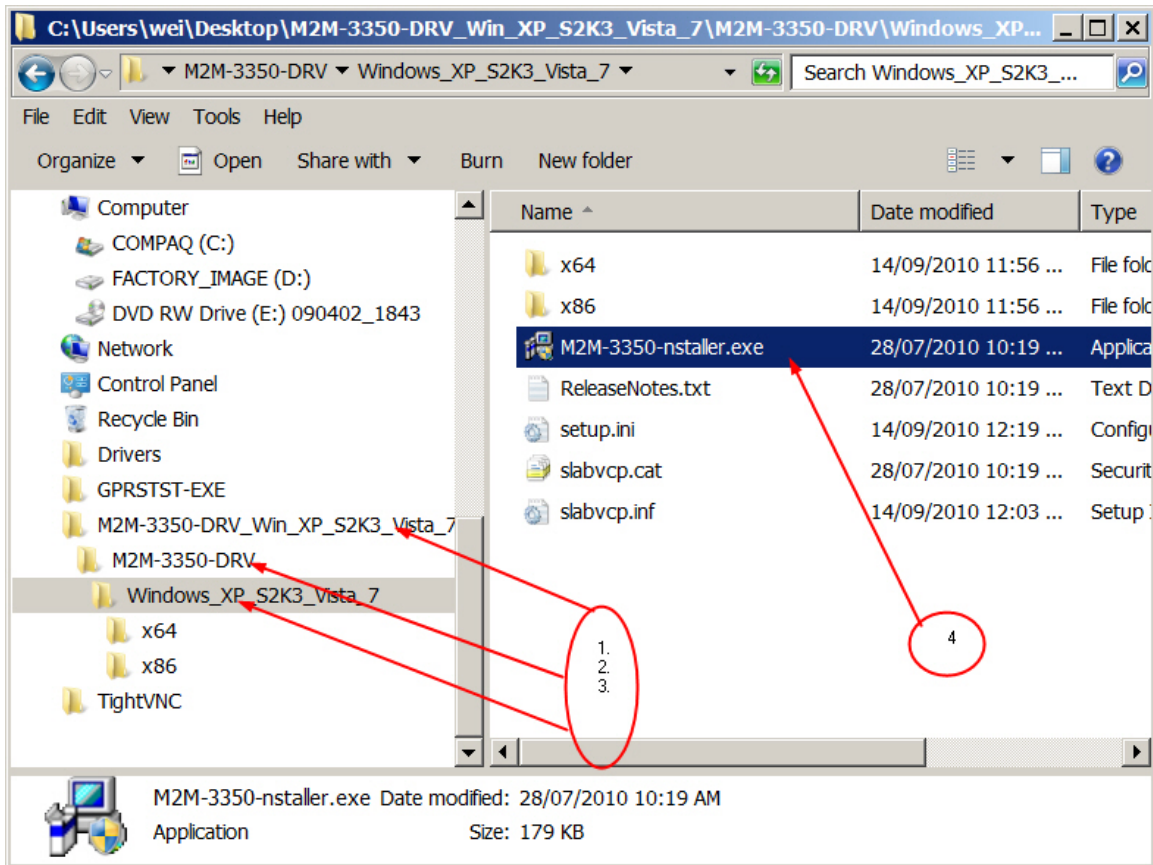
Step 2)

1) Open this folder



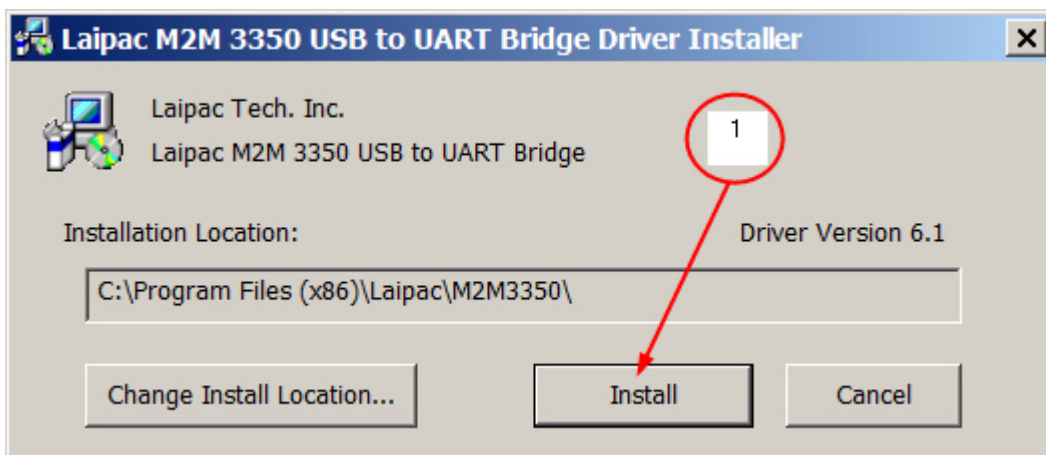
Step 3)

Follow instruction 1) → 2) → 3) → 4) to locate and launch “M2M-3350-install.exe”



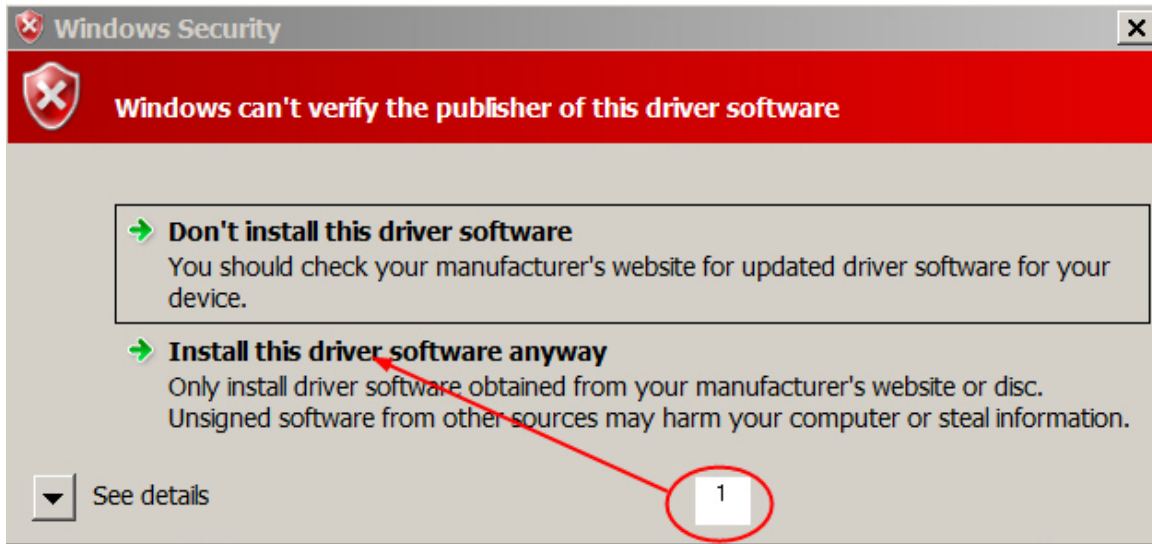
Step 4)

1) Click the “Install” button to continue



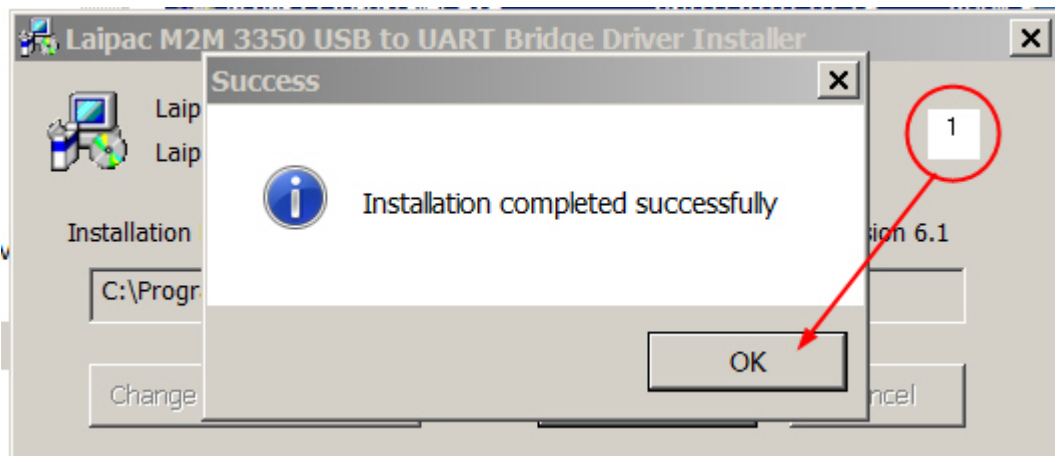
Step 5)

1) Ignore the warning message, click “Install this driver software anyway”



Step 6)

1) Click “OK” to finish the driver installation.



Step 7)

Connect M2M 3350 to PC through unit's USB port.

(If unit has been connected to PC before this step, you have to unplug unit 's USB cable for a while, then, plug it back)

Step 8)

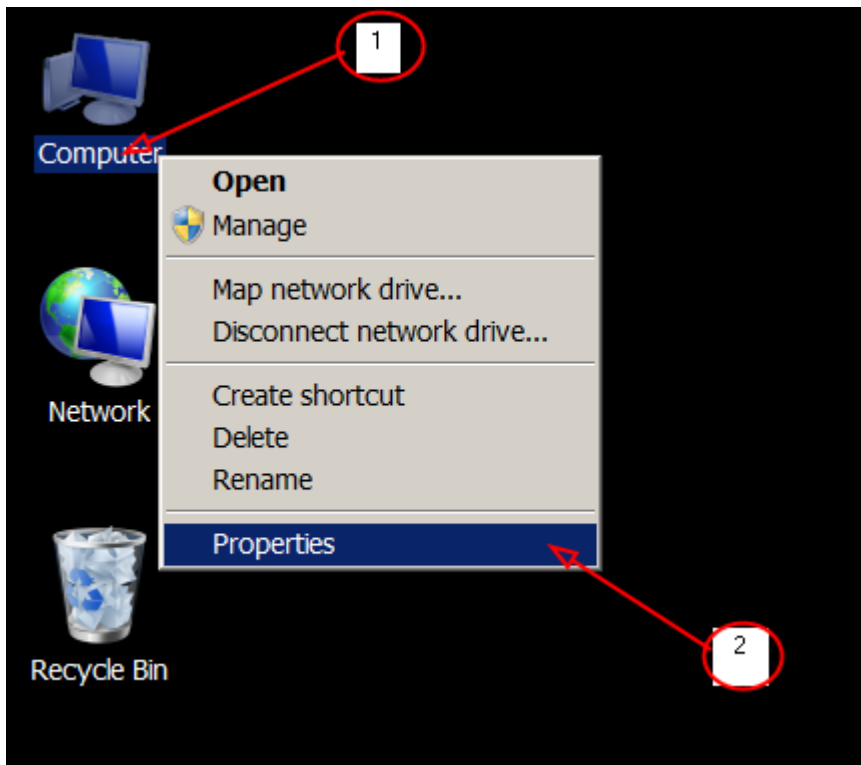
Wait for the computer to detect the device.

Step 9)

Check if a new serial port has been added this PC

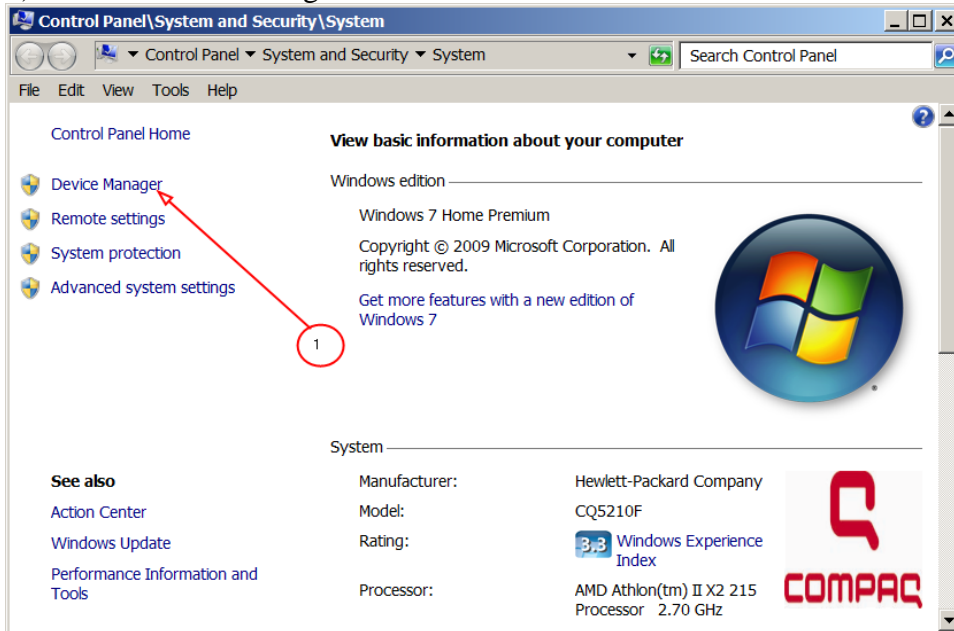
a)

1) Right click "Computer" icon on the "Desktop" → 2) Select "Properties"



b)

1) Click “Device Manager”



c)

- 1) Click here if it shows “+” sign
- 2) Click here if it shows “+” sign
- 3) “Laipac M2M USB to UART Bridge (COM4)” should be there. COM port number could be difference.

